

## Step 1: Preparation and Installation

- If the engine is installed in the vehicle, install the studs one at a time. If the engine is removed, install all three studs simultaneously.
- Ensure each hole is free of debris before installation. Use compressed air to blow out any particles.
- Insert the stud with blue loctite into the hole and manually tighten it using a 5mm Allen key until it stops.

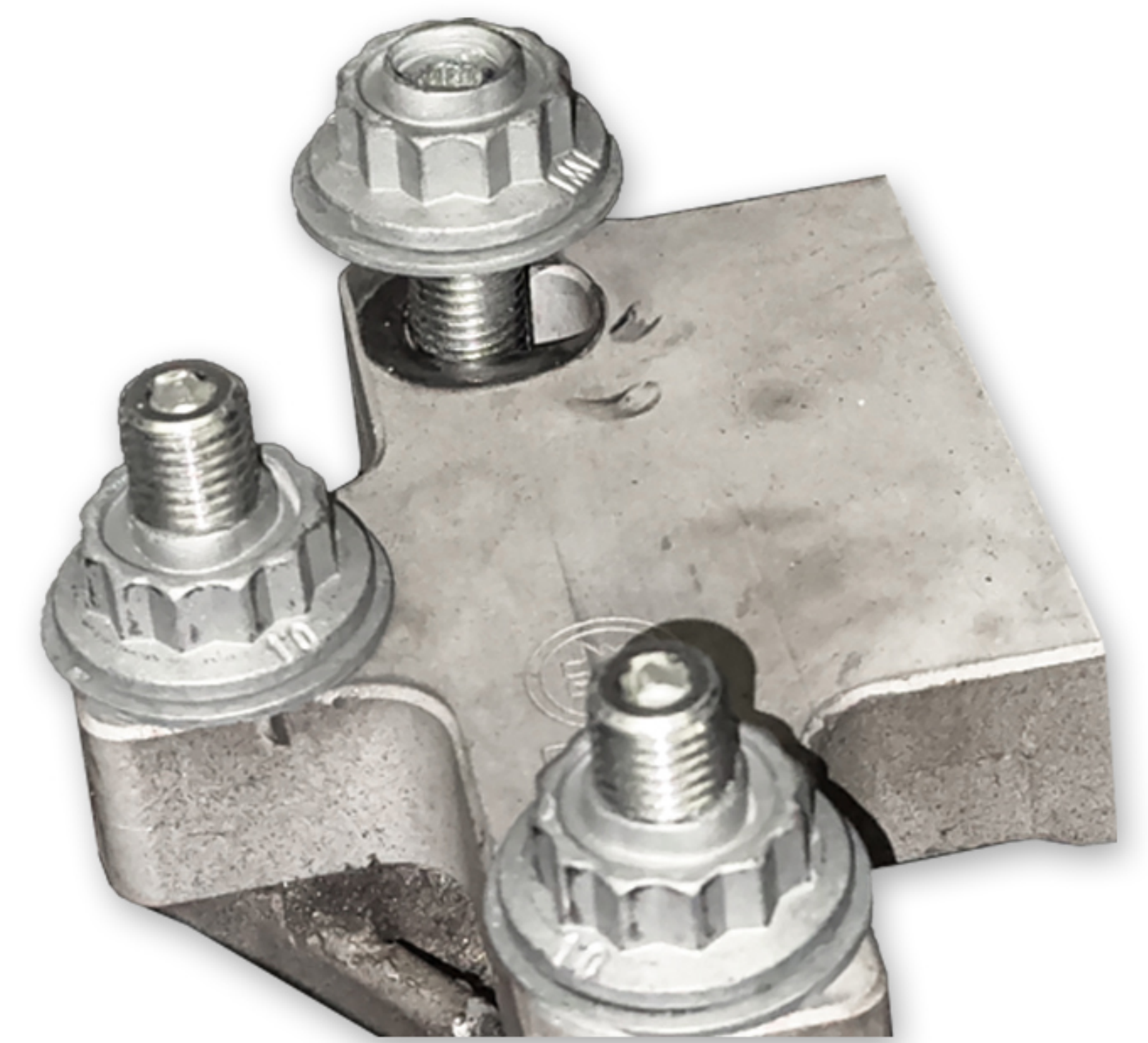
**Do Not Use power tools to prevent damage.**



**\*\* Ensure not to overtighten, as excessive force may cause the stud to break through the transmission.\*\***

## Step 2: Install/Torque the Nut

- Using a 21mm 12-point socket, install the nut on the stud.
- Secure the nut to a torque specification of **95 ft-lbs** using a torque wrench.



## Step 3: Repeat Installation/Final Torque Check

- Repeat the installation process for the remaining two studs.
- After all studs are installed, re-torque each nut to 85 ft-lbs to ensure consistent tightness across all fittings.

## Step 4: Marking for Verification

- Mark the stud and nut with a paint pen for future verification of movement or tampering.

